

# mGM-CSF ELISA

Enzyme immunoassay for the quantitative determination of mouse GM-CSF in cell culture supernatants, mouse serum or other body fluids.



**BE45231**



**96**



**2-8 °C**

EU: *For research use only.*

U.S.: *For research use only.  
Not for use in diagnostic procedures.*



**I B L I N T E R N A T I O N A L G M B H**

Flughafenstrasse 52a  
D-22335 Hamburg, Germany

Phone: +49 (0)40-53 28 91-0  
Fax: +49 (0)40-53 28 91-11

IBL@IBL-International.com  
www.IBL-International.com

## TABLE OF CONTENTS

1	Intended Use	3
2	Summary	3
3	Principles of the Test	4
4	Reagents Provided	6
5	Storage Instructions – ELISA Kit	7
6	Specimen Collection and Storage Instructions	7
7	Materials Required But Not Provided	8
8	Precautions for Use	9
9	Preparation of Reagents	11
10	Test Protocol	16
11	Calculation of Results	21
12	Limitations	24
13	Performance Characteristics	25
14	Ordering Information	27
15	Reagent Preparation Summary	28
16	Test Protocol Summary	29

## 1 Intended Use

The mouse GM-CSF ELISA is an enzyme-linked immunosorbent assay for the quantitative detection of mouse GM-CSF. **The mouse GM-CSF ELISA is for research use only. Not for diagnostic or therapeutic procedures.**

## 2 Summary

Granulocyte-macrophage colony-stimulating factor (GM-CSF) is a cytokine that has been characterized as a molecule capable of stimulating proliferation and differentiation of granulocyte/macrophage progenitor cells as well as modulating the functional activity of mature granulocytes and macrophages. In combination with erythropoietin, it supports the development of erythroid progenitors in vitro. The biological activities of GM-CSF substantially overlap with the effects of Interleukin 3. The reason for the redundancy of these pleiotropic cytokines may at least in part be explained by their competition for binding to common receptors.

GM-CSF is produced by a number of different cell types such as activated T-cells, B-cells, macrophages, mast cells, endothelial cells, fibroblasts, synoviocytes and various tumor cells in response to various stimuli.

Mouse GM-CSF as well as its receptors have been cloned. The encoded glycoprotein consists of 141 amino acid residues and has a molecular weight of about 23 kDa. The murine protein binds to a high affinity receptor complex consisting of two membrane glycoproteins, the GM-CSF receptor  $\alpha$  subunit with notable homology to the human receptor and the  $\beta$  subunit which also forms part of the receptors for IL-3 and IL-5.

Elevated levels of GM-CSF are found in mice after endotoxin injection.

### 3 Principles of the Test

An anti-mouse GM-CSF coating antibody is adsorbed onto microwells.

Mouse GM-CSF present in the sample or standard binds to antibodies adsorbed to the microwells.

Following incubation unbound biological components are removed during a wash step. A biotin-conjugated anti-mouse GM-CSF antibody is added and binds to mouse GM-CSF captured by the first antibody.

Following incubation unbound biotin-conjugated anti-mouse GM-CSF antibody is removed during a wash step. Streptavidin-HRP is added and binds to the biotin-conjugated anti-mouse GM-CSF antibody.

Figure 1

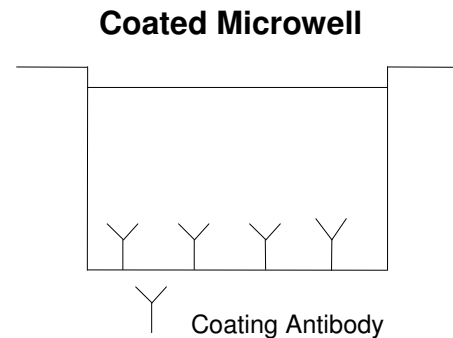


Figure 2

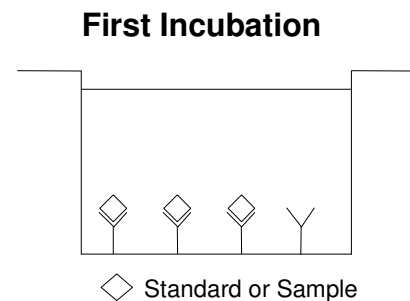


Figure 3

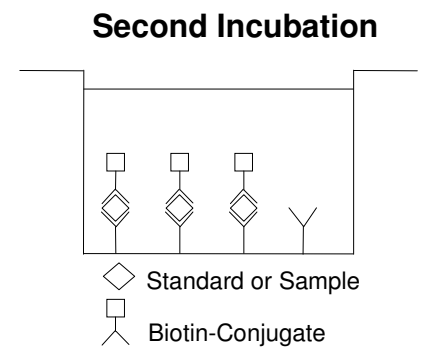
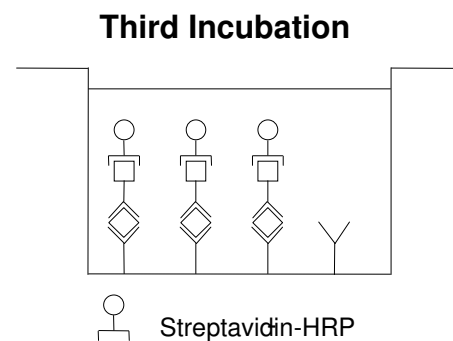
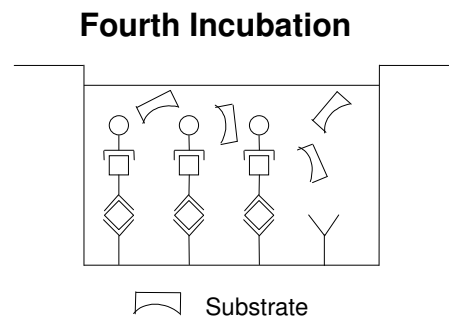


Figure 4



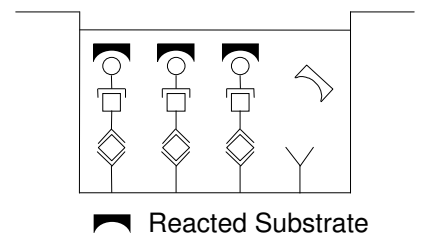
Following incubation unbound Streptavidin-HRP is removed during a wash step, and substrate solution reactive with HRP is added to the wells.

Figure 5



A coloured product is formed in proportion to the amount of mouse GM-CSF present in the sample or standard. The reaction is terminated by addition of acid and absorbance is measured at 450 nm. A standard curve is prepared from 7 mouse GM-CSF standard dilutions and mouse GM-CSF sample concentration determined.

Figure 6



## 4 Reagents Provided

- 1 aluminium pouch with a **Microwell Plate coated** with monoclonal antibody to mouse GM-CSF
- 1 vial (150  $\mu$ l) **Biotin-Conjugate** anti-mouse GM-CSF monoclonal antibody
- 1 vial (150  $\mu$ l) **Streptavidin-HRP**
- 2 vials mouse GM-CSF **Standard** lyophilized, 500 pg/ml upon reconstitution
- 1 vial (12 ml) **Sample Diluent**
- 1 vial (5 ml) **Assay Buffer Concentrate 20x**  
(PBS with 1% Tween 20 and 10% BSA)
- 1 bottle (50 ml) **Wash Buffer Concentrate 20x**  
(PBS with 1% Tween 20)
- 1 vial (15 ml) **Substrate Solution** (tetramethyl-benzidine)
- 1 vial (15 ml) **Stop Solution** (1M Phosphoric acid)
- 1 vial (0.4 ml) **Blue-Dye**
- 1 vial (0.4 ml) **Green-Dye**
- 1 vial (0.4 ml) **Red-Dye**
- 4 **Adhesive Films**

## **5 Storage Instructions – ELISA Kit**

Store kit reagents between 2° and 8°C. Immediately after use remaining reagents should be returned to cold storage (2° to 8°C). Expiry of the kit and reagents is stated on labels.

Expiry of the kit components can only be guaranteed if the components are stored properly, and if, in case of repeated use of one component, this reagent is not contaminated by the first handling.

## **6 Specimen Collection and Storage Instructions**

Cell culture supernatant and serum were tested with this assay. Other body fluids might be suitable for use in the assay. Remove serum from the clot as soon as possible after clotting.

Samples containing a visible precipitate must be clarified prior to use in the assay. Do not use grossly hemolyzed or lipemic specimens.

Samples should be aliquoted and must be stored frozen at -20°C to avoid loss of bioactive mouse GM-CSF. If samples are to be run within 24 hours, they may be stored at 2° to 8°C (for sample stability refer to 13.5).

Avoid repeated freeze-thaw cycles. Prior to assay, the frozen sample should be brought to room temperature slowly and mixed gently.

## 7 Materials Required But Not Provided

- 5 ml and 10 ml graduated pipettes
- 5  $\mu$ l to 1000  $\mu$ l adjustable single channel micropipettes with disposable tips
- 50  $\mu$ l to 300  $\mu$ l adjustable multichannel micropipette with disposable tips
- Multichannel micropipette reservoir
- Beakers, flasks, cylinders necessary for preparation of reagents
- Device for delivery of wash solution (multichannel wash bottle or automatic wash system)
- Microwell strip reader capable of reading at 450 nm (620 nm as optional reference wave length)
- Glass-distilled or deionized water
- Statistical calculator with program to perform regression analysis

## 8 Precautions for Use

- All chemicals should be considered as potentially hazardous. We therefore recommend that this product is handled only by those persons who have been trained in laboratory techniques and that it is used in accordance with the principles of good laboratory practice. Wear suitable protective clothing such as laboratory overalls, safety glasses and gloves. Care should be taken to avoid contact with skin or eyes. In the case of contact with skin or eyes wash immediately with water. See material safety data sheet(s) and/or safety statement(s) for specific advice.
- Reagents are intended for research use only and are not for use in diagnostic or therapeutic procedures.
- Do not mix or substitute reagents with those from other lots or other sources.
- Do not use kit reagents beyond expiration date on label.
- Do not expose kit reagents to strong light during storage or incubation.
- Do not pipette by mouth.
- Do not eat or smoke in areas where kit reagents or samples are handled.
- Avoid contact of skin or mucous membranes with kit reagents or specimens.
- Rubber or disposable latex gloves should be worn while handling kit reagents or specimens.
- Avoid contact of substrate solution with oxidizing agents and metal.
- Avoid splashing or generation of aerosols.
- In order to avoid microbial contamination or cross-contamination of reagents or specimens which may invalidate the test use disposable pipette tips and/or pipettes.
- Use clean, dedicated reagent trays for dispensing the conjugate and substrate reagent.

- Exposure to acid inactivates the conjugate.
- Glass-distilled water or deionized water must be used for reagent preparation.
- Substrate solution must be at room temperature prior to use.
- Decontaminate and dispose specimens and all potentially contaminated materials as they could contain infectious agents. The preferred method of decontamination is autoclaving for a minimum of 1 hour at 121.5°C.
- Liquid wastes not containing acid and neutralized waste may be mixed with sodium hypochlorite in volumes such that the final mixture contains 1.0% sodium hypochlorite. Allow 30 minutes for effective decontamination. Liquid waste containing acid must be neutralized prior to the addition of sodium hypochlorite.

## 9 Preparation of Reagents

**Buffer concentrates** should be brought to room temperature and should be diluted before starting the test procedure.

If crystals have formed in the **Buffer Concentrates**, warm them gently until they have completely dissolved.

### 9.1 Wash Buffer (1x)

Pour entire contents (50 ml) of the Wash Buffer Concentrate (20x) into a clean 1000 ml graduated cylinder. Bring to final volume of 1000 ml with glass-distilled or deionized water.

Mix gently to avoid foaming.

Transfer to a clean wash bottle and store at 2° to 25°C. Please note that Wash Buffer (1x) is stable for 30 days.

Wash Buffer (1x) may also be prepared as needed according to the following table:

Number of Strips	Wash Buffer Concentrate (20x) (ml)	Distilled Water (ml)
1 - 6	25	475
1 - 12	50	950

### 9.2 Assay Buffer (1x)

Pour the entire contents (5 ml) of the **Assay Buffer Concentrate** (20x) into a clean 100 ml graduated cylinder. Bring to final volume of 100 ml with distilled water. Mix gently to avoid foaming.

Store at 2° to 8°C. Please note that the Assay Buffer (1x) is stable for 30 days.

Assay Buffer (1x) may also be prepared as needed according to the following table:

Number of Strips	Assay Buffer Concentrate (ml)	Distilled Water (ml)
1 - 6	2.5	47.5
1 - 12	5.0	95.0

### 9.3 Biotin-Conjugate

**Please note that the Biotin-Conjugate should be used within 30 minutes after dilution.**

Make a 1:100 dilution of the concentrated **Biotin-Conjugate** solution with Assay Buffer (1x) in a clean plastic tube as needed according to the following table:

Number of Strips	Biotin-Conjugate (ml)	Assay Buffer (1x) (ml)
1 - 6	0.06	5.94
1 - 12	0.12	11.88

### 9.4 Streptavidin-HRP

**Please note that the Streptavidin-HRP should be used within 30 minutes after dilution.**

Make a 1:100 dilution of the concentrated **Streptavidin-HRP** solution with Assay Buffer (1x) in a clean plastic tube as needed according to the following table:

Number of Strips	Streptavidin-HRP (ml)	Assay Buffer (1x) (ml)
1 - 6	0.06	5.94
1 - 12	0.12	11.88

## 9.5 Mouse GM-CSF Standard

Reconstitute **mouse GM-CSF standard** by addition of distilled water. Reconstitution volume is stated on the label of the standard vial. Allow the reconstituted standard to sit for 10-30 minutes. Swirl or mix gently to insure complete and homogeneous solubilization (concentration of reconstituted standard = 500 pg/ml). Mix well prior to making dilutions.

After usage remaining standard cannot be stored and has to be discarded.

**Standard dilutions** can be prepared directly on the microwell plate (see 10.c) or alternatively in tubes (see 9.5.1).

### 9.5.1 External Standard Dilution

Label 7 tubes, one for each standard point.

S1, S2, S3, S4, S5, S6, S7

Then prepare 1:2 serial dilutions for the standard curve as follows:  
Pipette 225  $\mu$ l of Sample Diluent into each tube.

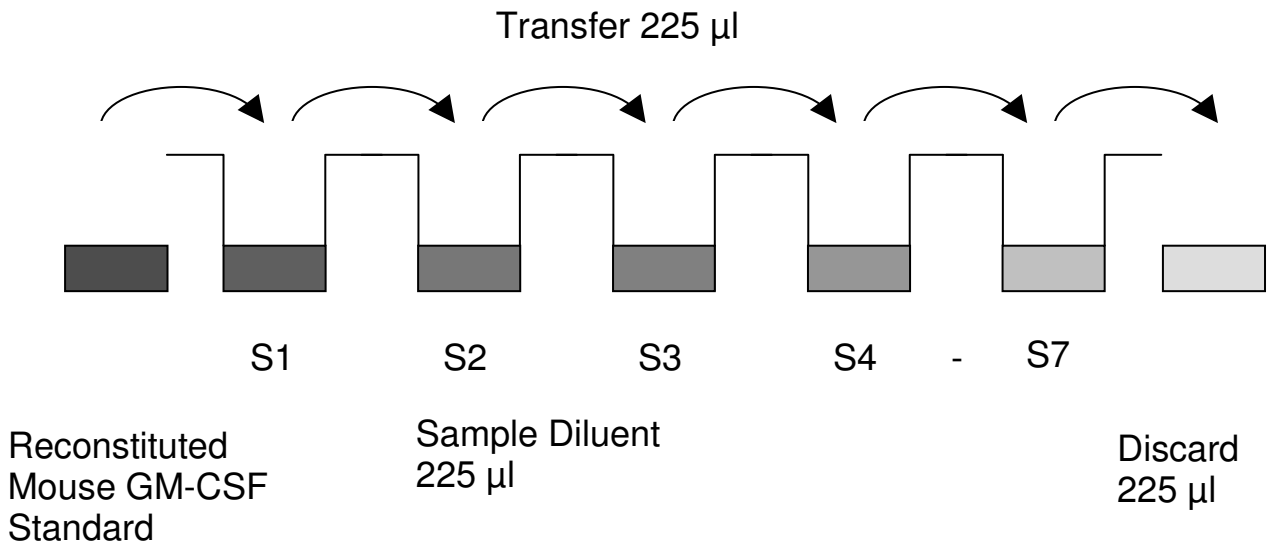
Pipette 225  $\mu$ l of reconstituted standard (concentration = 500 pg/ml) into the first tube, labelled S1, and mix (concentration of standard 1 = 250 pg/ml).

Pipette 225  $\mu$ l of this dilution into the second tube, labelled S2, and mix thoroughly before the next transfer.

Repeat serial dilutions 5 more times thus creating the points of the standard curve (see Figure 7).

Sample Diluent serves as blank.

Figure 7



## 9.6 Addition of Colour-giving Reagents: Blue-Dye, Green-Dye, Red-Dye

In order to help our customers to avoid any mistakes in pipetting the ELISAs, IBL International offers a tool that helps to monitor the addition of even very small volumes of a solution to the reaction well by giving distinctive colours to each step of the ELISA procedure.

**This procedure is optional**, does not in any way interfere with the test results, and is designed to help the customer with the performance of the test, but can also be omitted, just following the instruction booklet.

Alternatively, the dye solutions from the stocks provided (**Blue-Dye, Green-Dye, Red-Dye**) can be added to the reagents according to the following guidelines:

1. **Diluent:** Before standard and sample dilution add the **Blue-Dye** at a dilution of 1:250 (see table below) to the appropriate diluent (1x) according to the test protocol. After addition of **Blue-Dye**, proceed according to the instruction booklet.

5 ml Sample Diluent	20 $\mu$ l <b>Blue-Dye</b>
12 ml Sample Diluent	48 $\mu$ l <b>Blue-Dye</b>
50 ml Sample Diluent	200 $\mu$ l <b>Blue-Dye</b>

**2. Biotin-Conjugate:**

Before dilution of the concentrated Biotin-Conjugate, add the **Green-Dye** at a dilution of 1:100 (see table below) to the Assay Buffer (1x) used for the final conjugate dilution. Proceed after addition of **Green-Dye** according to the instruction booklet: Preparation of Biotin-Conjugate.

6 ml Assay Buffer (1x)	60 $\mu$ l <b>Green-Dye</b>
12 ml Assay Buffer (1x)	120 $\mu$ l <b>Green-Dye</b>

**3. Streptavidin-HRP:**

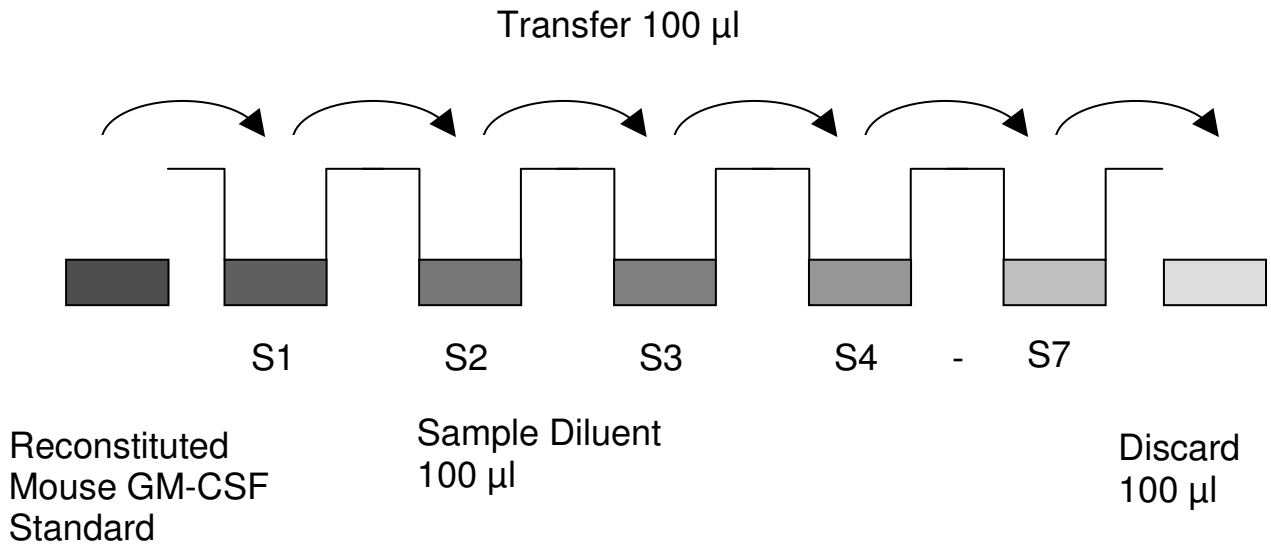
Before dilution of the concentrated Streptavidin-HRP, add the **Red-Dye** at a dilution of 1:250 (see table below) to the Assay Buffer (1x) used for the final Streptavidin-HRP dilution. Proceed after addition of **Red-Dye** according to the instruction booklet: Preparation of Streptavidin-HRP.

6 ml Assay Buffer (1x)	24 $\mu$ l <b>Red-Dye</b>
12 ml Assay Buffer (1x)	48 $\mu$ l <b>Red-Dye</b>

## 10 Test Protocol

- a. Determine the number of microwell strips required to test the desired number of samples plus appropriate number of wells needed for running blanks and standards. Each sample, standard, blank and optional control sample should be assayed in duplicate. Remove extra microwell strips from holder and store in foil bag with the desiccant provided at 2°-8 °C sealed tightly.
- b. Wash the microwell strips twice with approximately 400 µl **Wash Buffer** per well with thorough aspiration of microwell contents between washes. Allow the Wash Buffer to sit in the wells for about **10 – 15 seconds** before aspiration. Take care not to scratch the surface of the microwells.  
After the last wash step, empty wells and tap microwell strips on absorbent pad or paper towel to remove excess Wash Buffer. Use the microwell strips immediately after washing. Alternatively microwell strips can be placed upside down on a wet absorbent paper for not longer than 15 minutes. **Do not allow wells to dry.**
- c. **Standard dilution on the microwell plate** (Alternatively the standard dilution can be prepared in tubes - see 9.5.1):  
Add 100 µl of Sample Diluent in duplicate to all **standard wells**.  
Pipette 100 µl of prepared **standard** (see Preparation of Standard 9.5, concentration = 500 pg/ml), in duplicate, into well A1 and A2 (see Table 1). Mix the contents of wells A1 and A2 by repeated aspiration and ejection (concentration of standard 1 S1 = 250 pg/ml), and transfer 100 µl to wells B1 and B2, respectively (see Figure 8). Take care not to scratch the inner surface of the microwells.  
Continue this procedure 6 times, creating two rows of mouse GM-CSF standard dilutions, ranging from 250.0 to 3.9 pg/ml).  
Discard 100 µl of the contents from the last microwells (G1, G2) used.

Figure 8



In case of an **external standard dilution** (see 9.5.1), pipette 100  $\mu$ l of these standard dilutions (S1 - S7) in the standard wells according to Table 1.

Table 1

Table depicting an example of the arrangement of blanks, standards and samples in the microwell strips:

	<b>1</b>	<b>2</b>	<b>3</b>	<b>4</b>
<b>A</b>	Standard 1 (250.0 pg/ml)	Standard 1 (250.0 pg/ml)	Sample 1	Sample 1
<b>B</b>	Standard 2 (125.0 pg/ml)	Standard 2 (125.0 pg/ml)	Sample 2	Sample 2
<b>C</b>	Standard 3 (62.5 pg/ml)	Standard 3 (62.5 pg/ml)	Sample 3	Sample 3
<b>D</b>	Standard 4 (31.3 pg/ml)	Standard 4 (31.3 pg/ml)	Sample 4	Sample 4
<b>E</b>	Standard 5 (15.6 pg/ml)	Standard 5 (15.6 pg/ml)	Sample 5	Sample 5
<b>F</b>	Standard 6 (7.8 pg/ml)	Standard 6 (7.8 pg/ml)	Sample 6	Sample 6
<b>G</b>	Standard 7 (3.9 pg/ml)	Standard 7 (3.9 pg/ml)	Sample 7	Sample 7
<b>H</b>	Blank	Blank	Sample 8	Sample 8

- d. Add 100  $\mu$ l of **Sample Diluent** in duplicate to the **blank wells**.
- e. Add 50  $\mu$ l of **Sample Diluent** to the **sample wells**.
- f. Add 50  $\mu$ l of each **sample** in duplicate to the **sample wells**.
- g. Cover with an adhesive film and incubate at room temperature (18 to 25 °C) for 2 hours, if available on a microplate shaker set at 400 rpm.
- h. Prepare **Biotin-Conjugate** (see Preparation of Biotin-Conjugate 9.3).
- i. Remove adhesive film and empty wells. **Wash** microwell strips 4 times according to point b. of the test protocol. Proceed immediately to the next step.
- j. Add 100  $\mu$ l of **Biotin-Conjugate** to all wells.
- k. Cover with an adhesive film and incubate at room temperature (18 to 25 °C) for 1 hours, if available on a microplate shaker set at 400 rpm.
- l. Prepare **Streptavidin-HRP** (refer to Preparation of Streptavidin-HRP 9.4).
- m. Remove adhesive film and empty wells. **Wash** microwell strips 4 times according to point b. of the test protocol. Proceed immediately to the next step.
- n. Add 100  $\mu$ l of diluted **Streptavidin-HRP** to all wells, including the blank wells.
- o. Cover with an adhesive film and incubate at room temperature (18° to 25 °C) for 30 minutes, if available on a microplate shaker set at 400 rpm.
- p. Remove adhesive film and empty wells. **Wash** microwell strips 4 times according to point b. of the test protocol. Proceed immediately to the next step.
- q. Pipette 100  $\mu$ l of **TMB Substrate Solution** to all wells.
- r. Incubate the microwell strips at room temperature (18° to 25 °C) for about 10 min. Avoid direct exposure to intense light.

**The colour development on the plate should be monitored and the substrate reaction stopped (see next point of this protocol)**

**before positive wells are no longer properly recordable. Determination of the ideal time period for colour development has to be done individually for each assay.**

It is recommended to add the stop solution when the highest standard has developed a dark blue colour. Alternatively the colour development can be monitored by the ELISA reader at 620 nm. The substrate reaction should be stopped as soon as Standard 1 has reached an OD of 0.9 – 0.95.

- s. Stop the enzyme reaction by quickly pipetting 100 µl of **Stop Solution** into each well. It is important that the Stop Solution is spread quickly and uniformly throughout the microwells to completely inactivate the enzyme. Results must be read immediately after the Stop Solution is added or within one hour if the microwell strips are stored at 2 - 8 °C in the dark.
- t. Read absorbance of each microwell on a spectro-photometer using 450 nm as the primary wave length (optionally 620 nm as the reference wave length; 610 nm to 650 nm is acceptable). Blank the plate reader according to the manufacturer's instructions by using the blank wells. Determine the absorbance of both the samples and the standards.

**Note: In case of incubation without shaking the obtained O.D. values may be lower than indicated below. Nevertheless the results are still valid.**

## 11 Calculation of Results

- Calculate the average absorbance values for each set of duplicate standards and samples. Duplicates should be within 20 per cent of the mean value.
- Create a standard curve by plotting the mean absorbance for each standard concentration on the ordinate against the mouse GM-CSF concentration on the abscissa. Draw a best fit curve through the points of the graph (a 5-parameter curve fit is recommended).
- To determine the concentration of circulating mouse GM-CSF for each sample, first find the mean absorbance value on the ordinate and extend a horizontal line to the standard curve. At the point of intersection, extend a vertical line to the abscissa and read the corresponding mouse GM-CSF concentration.
- **If instructions in this protocol have been followed samples have been diluted 1:2 (50 µl sample + 50 µl Sample Diluent), the concentration read from the standard curve must be multiplied by the dilution factor (x 2).**
- **Calculation of samples with a concentration exceeding standard 1 may result in incorrect mouse GM-CSF levels. Such samples require further external predilution according to expected mouse GM-CSF values with Sample Diluent in order to precisely quantitate the actual mouse GM-CSF level.**
- It is suggested that each testing facility establishes a control sample of known mouse GM-CSF concentration and runs this additional control with each assay. If the values obtained are not within the expected range of the control, the assay results may be invalid.
- A representative standard curve is shown in Figure 9. This curve cannot be used to derive test results. Each laboratory must prepare a standard curve for each group of microwell strips assayed.

Figure 9

Representative standard curve for mouse GM-CSF ELISA. Mouse GM-CSF was diluted in serial 2-fold steps in Sample Diluent. Do not use this standard curve to derive test results. A standard curve must be run for each group of microwell strips assayed.

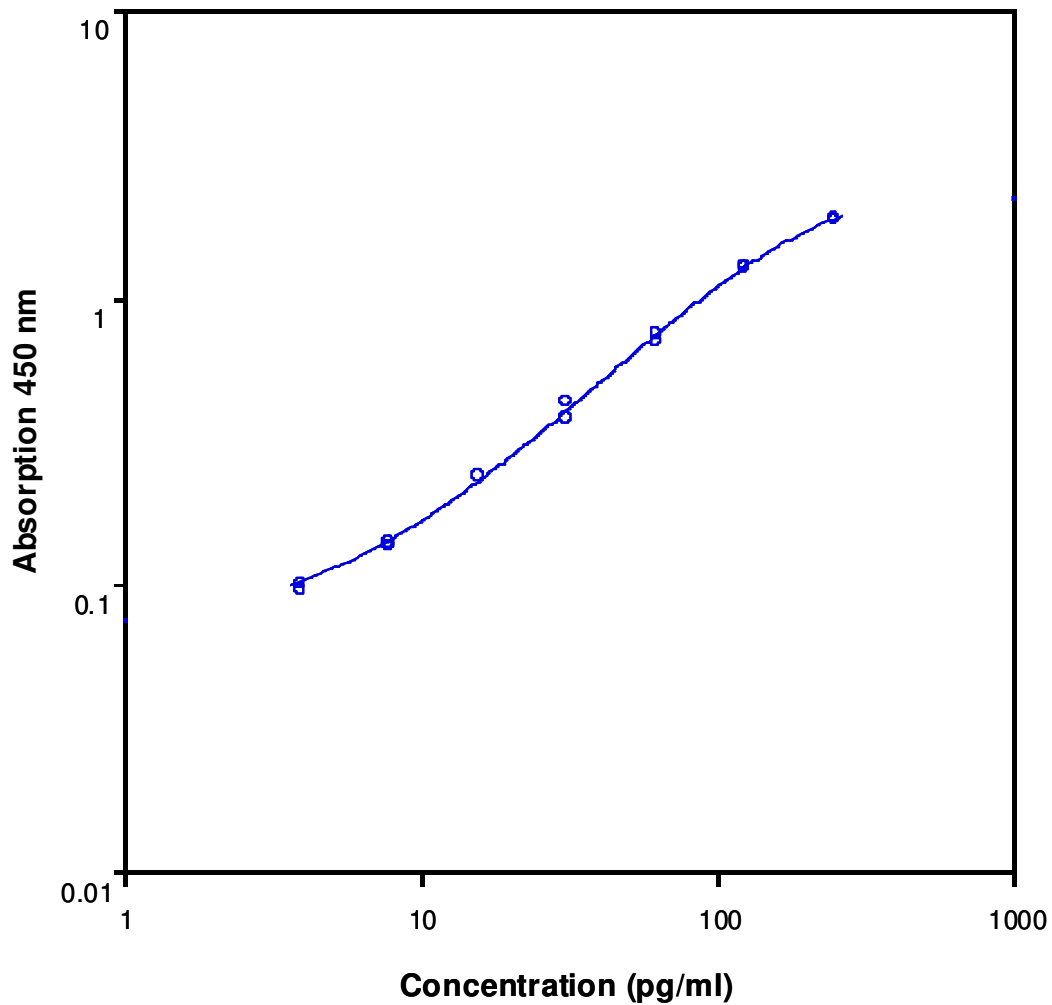


Table 2

Typical data using the mouse GM-CSF ELISA

Measuring wavelength: 450 nm

Reference wavelength: 620 nm

Standard	Mouse GM-CSF Concentration (pg/ml)	O.D. at 450 nm	Mean O.D. at 450 nm	C.V. (%)
1	250.0	1.857 1.875	1.866	0.5
2	125.0	1.278 1.274	1.276	0.2
3	62.5	0.701 0.751	0.726	3.4
4	31.3	0.429 0.383	0.406	5.7
5	15.6	0.237 0.240	0.239	0.6
6	7.8	0.141 0.136	0.139	1.8
7	3.9	0.100 0.096	0.098	2.0
Blank	0.0	0.039 0.031	0.035	16.2

The OD values of the standard curve may vary according to the conditions of assay performance (e.g. operator, pipetting technique, washing technique or temperature effects). Furthermore shelf life of the kit may affect enzymatic activity and thus colour intensity. Values measured are still valid.

## 12 Limitations

- Since exact conditions may vary from assay to assay, a standard curve must be established for every run.
- Bacterial or fungal contamination of either screen samples or reagents or cross-contamination between reagents may cause erroneous results.
- Disposable pipette tips, flasks or glassware are preferred, reusable glassware must be washed and thoroughly rinsed of all detergents before use.
- Improper or insufficient washing at any stage of the procedure will result in either false positive or false negative results. Empty wells completely before dispensing fresh wash solution, fill with Wash Buffer as indicated for each wash cycle and do not allow wells to sit uncovered or dry for extended periods.

## **13 Performance Characteristics**

### **13.1 Sensitivity**

The limit of detection of mouse GM-CSF defined as the analyte concentration resulting in an absorbance significantly higher than that of the dilution medium (mean plus 2 standard deviations) was determined to be 2.0 pg/ml (mean of 6 independent assays).

### **13.2 Reproducibility**

#### **13.2.1 Intra-assay**

Reproducibility within the assay was evaluated in 3 independent experiments. Each assay was carried out with 6 replicates of 8 serum samples containing different concentrations of mouse GM-CSF. 2 standard curves were run on each plate. The calculated overall intra-assay coefficient of variation was < 5%.

#### **13.2.2 Inter-assay**

Assay to assay reproducibility within one laboratory was evaluated in 3 independent experiments. Each assay was carried out with 6 replicates of 8 serum samples containing different concentrations of mouse GM-CSF. 2 standard curves were run on each plate. The calculated overall inter-assay coefficient of variation was < 10%.

### **13.3 Spike Recovery**

The spike recovery was evaluated by spiking 4 levels of mouse GM-CSF into pooled murine serum. Recoveries were determined in 2 independent experiments with 4 replicates each.

The unspiked serum was used as blank in these experiments.

The overall mean recovery was 85%.

### **13.4 Dilution Parallelism**

4 serum samples with different levels of mouse GM-CSF were analysed at serial 2 fold dilutions with 4 replicates each. The overall mean recovery was 106%.

### **13.5 Sample Stability**

#### **13.5.1 Freeze-Thaw Stability**

Aliquots of spiked serum samples were stored at -20 °C and thawed 5 times, and the mouse GM-CSF levels determined. There was no significant loss of mouse GM-CSF immunoreactivity detected by freezing and thawing.

#### **13.5.2 Storage Stability**

Aliquots of spiked serum samples were stored at -20 °C, 2-8 °C, room temperature (RT) and at 37 °C, and the mouse GM-CSF level determined after 24 h. There was no significant loss of mouse GM-CSF immunoreactivity detected during storage under above conditions.

### **13.6 Specificity**

The interference of circulating factors of the immune system was evaluated by spiking these proteins at physiologically relevant concentrations into a mouse GM-CSF positive serum. There was no crossreactivity detected.

### **13.7 Expected Values**

There were no detectable mouse GM-CSF levels found. Elevated mouse GM-CSF levels depend on the type of immunological disorder.

## **14 Ordering Information**

For orders please contact:

**See last page**

For technical information please contact:

e-mail: [IBL@IBL-International.com](mailto:IBL@IBL-International.com)  
**[www.IBL-International.com](http://www.IBL-International.com)**

## 15 Reagent Preparation Summary

### 15.1 Wash Buffer (1x)

Add **Wash Buffer Concentrate** 20x (50 ml) to 950 ml distilled water.

Number of Strips	Wash Buffer Concentrate (ml)	Distilled Water (ml)
1 - 6	25	475
1 - 12	50	950

### 15.2 Assay Buffer (1x)

Add **Assay Buffer Concentrate** 20x (5 ml) to 95 ml distilled water.

Number of Strips	Assay Buffer Concentrate (ml)	Distilled Water (ml)
1 - 6	2.5	47.5
1 - 12	5.0	95.0

### 15.3 Biotin-Conjugate

Make a 1:100 dilution of **Biotin-Conjugate** in Assay Buffer (1x):

Number of Strips	Biotin-Conjugate (ml)	Assay Buffer (1x) (ml)
1 - 6	0.06	5.94
1 - 12	0.12	11.88

### 15.4 Streptavidin-HRP

Make a 1:100 dilution of **Streptavidin-HRP** in Assay Buffer (1x):

Number of Strips	Streptavidin-HRP (ml)	Assay Buffer (1x) (ml)
1 - 6	0.06	5.94
1 - 12	0.12	11.88

### 15.5 Mouse GM-CSF Standard

Reconstitute lyophilized **mouse GM-CSF standard** with distilled water. (Reconstitution volume is stated on the label of the standard vial.)

## 16 Test Protocol Summary


1. Determine the number of microwell strips required.
2. Wash microwell strips twice with Wash Buffer.
3. Standard dilution on the microwell plate: Add 100 µl Sample Diluent, in duplicate, to all standard wells. Pipette 100 µl prepared standard into the first wells and create standard dilutions by transferring 100 µl from well to well. Discard 100 µl from the last wells.  
Alternatively external standard dilution in tubes (see 9.5.1): Pipette 100 µl of these standard dilutions in the microwells strips.
4. Add 100 µl Sample Diluent, in duplicate, to the blank wells.
5. Add 50 µl Sample Diluent to sample wells.
6. Add 50 µl sample in duplicate, to designated sample wells.
7. Cover microwell strips and incubate 2 hours at room temperature (18° to 25°C).
8. Prepare Biotin-Conjugate.
9. Empty and wash microwell strips 4 times with Wash Buffer.
10. Add 100 µl Biotin-Conjugate to all wells.
11. Cover microwell strips and incubate 1 hour at room temperature (18° to 25°C).
12. Prepare Streptavidin-HRP.
13. Empty and wash microwell strips 4 times with Wash Buffer.
14. Add 100 µl diluted Streptavidin-HRP to all wells.
15. Cover microwell strips and incubate 30 minutes at room temperature (18° to 25°C).
16. Empty and wash microwell strips 4 times with Wash Buffer.
17. Add 100 µl of TMB Substrate Solution to all wells.
18. Incubate the microwell strips for about 10 minutes at room temperature (18° to 25°C).
19. Add 100 µl Stop Solution to all wells.
20. Blank microwell reader and measure colour intensity at 450 nm.

**Note: If instructions in this protocol have been followed samples have been diluted 1:2 (50 µl sample + 50x µl Sample Diluent), the concentration read from the standard curve must be multiplied by the dilution factor (x 2).**

# Symbols / Symbole / Symbôles / Símbolos / Símbolos / Σύμβολα

	Cat.-No.: / Kat.-Nr.: / No.- Cat.: / Cat.-No.: / N.º Cat.: / N.-Cat.: / Αριθμός-Κατ.:
	Lot-No.: / Chargen-Bez.: / No. Lot: / Lot-No.: / Lote N.º: / Lotto n.: / Αριθμός -Παραγωγή:
	Use by: / Verwendbar bis: / Utiliser à: / Usado por: / Usar até: / Da utilizzare entro: / Χρησιμοποιείται από:
	No. of Tests: / Kitgröße: / Nb. de Tests: / No. de Determ.: / N.º de Testes: / Quantità dei tests: / Αριθμός εξετάσεων:
	Concentrate / Konzentrat / Concentré / Concentrar / Concentrado / Concentrato / Συμπύκνωμα
	Lyophilized / Lyophilisat / Lyophilisé / Liofilizado / Liofilizado / Liofilizzato / Λυοφιλιασμένο
	In Vitro Diagnostic Medical Device. / In-vitro-Diagnostikum. / Appareil Médical pour Diagnostics In Vitro. / Dispositivo Médico para Diagnóstico In Vitro. / Equipamento Médico de Diagnóstico In Vitro. / Dispositivo Medico Diagnostico In vitro. / Ιατρική συσκευή για In-Vitro Διάγνωση.
	Evaluation kit. / Nur für Leistungsbewertungszwecke. / Kit pour évaluation. / Juego de Reactivos para Evaluació. / Kit de avaliação. / Kit di valutazione. / Κιτ Αξιολόγησης.
	Read instructions before use. / Arbeitsanleitung lesen. / Lire la fiche technique avant emploi. / Lea las instrucciones antes de usar. / Ler as instruções antes de usar. / Leggere le istruzioni prima dell'uso. / Διαβάστε τις οδηγίες πριν την χρήση.
	Keep away from heat or direct sun light. / Vor Hitze und direkter Sonneneinstrahlung schützen. / Garder à l'abri de la chaleur et de toute exposition lumineuse. / Manténgase alejado del calor o la luz solar directa. / Manter longe do calor ou luz solar directa. / Non esporre ai raggi solari. / Να φυλάσσεται μακριά από θερμότητα και άμεση επαφή με το φως του ηλίου.
	Store at: / Lagern bei: / Stocker à: / Almacene a: / Armazenar a: / Conservare a: / Αποθήκευση στους:
	Manufacturer: / Hersteller: / Fabricant: / Productor: / Fabricante: / Fabricante: / Παραγωγός:
	Caution! / Vorsicht! / Attention! / ¡Precaución! / Cuidado! / Attenzione! / Προσοχή!
<p>Symbols of the kit components see MATERIALS SUPPLIED.          Die Symbole der Komponenten sind im Kapitel KOMPONENTEN DES KITS beschrieben.          Voir MATERIEL FOURNI pour les symbôles des composants du kit.          Símbolos de los componentes del juego de reactivos, vea MATERIALES SUMINISTRADOS.          Para símbolos dos componentes do kit ver MATERIAIS FORNECIDOS.          Per i simboli dei componenti del kit si veda COMPONENTI DEL KIT.          Για τα σύμβολα των συστατικών του κιτ συμβουλευτείτε το ΠΑΡΕΧΟΜΕΝΑ ΥΛΙΚΑ.</p>	

## IBL AFFILIATES WORLDWIDE

	<b>IBL International GmbH</b> Flughafenstr. 52A, 22335 Hamburg, Germany	Tel.: + 49 (0) 40 532891 -0 Fax: -11 E-MAIL: IBL@IBL-International.com WEB: <a href="http://www.IBL-International.com">http://www.IBL-International.com</a>
	<b>IBL International Corp.</b> 194 Wildcat Road, Toronto, Ontario M3J 2N5, Canada	Tel.: +1 (416) 645 -1703 Fax: -1704 E-MAIL: Sales@IBL-International.com WEB: <a href="http://www.IBL-International.com">http://www.IBL-International.com</a>

**LIABILITY:** Complaints will be accepted in each mode –written or vocal. Preferred is that the complaint is accompanied with the test performance and results. Any modification of the test procedure or exchange or mixing of components of different lots could negatively affect the results. These cases invalidate any claim for replacement. Regardless, in the event of any claim, the manufacturer's liability is not to exceed the value of the test kit. Any damage caused to the kit during transportation is not subject to the liability of the manufacturer